

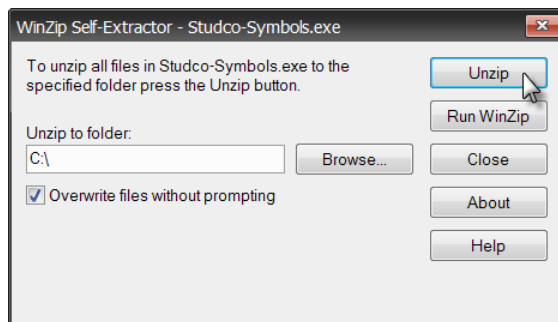
EZY Jamb Symbol Library Loading Instructions

Requirements:

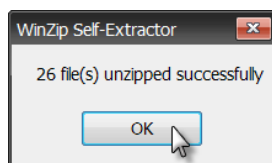
The EZY Jamb Symbol Library is compatible with AutoCAD 2007 & 2008 based products. There are no additional hardware or software requirements above those specified for AutoCAD.

Unzipping the files:

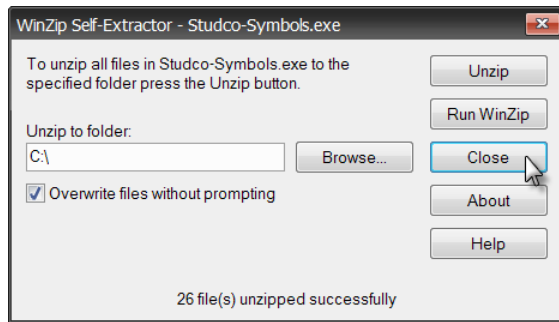
1. Double-Click on the file "Studco-Symbols.exe"
2. In the WinZip Self-Extractor dialog box, specify "C:\\" as the "Unzip to folder" and click the "Unzip" button.



3. Click "OK" once the files have been unzipped.

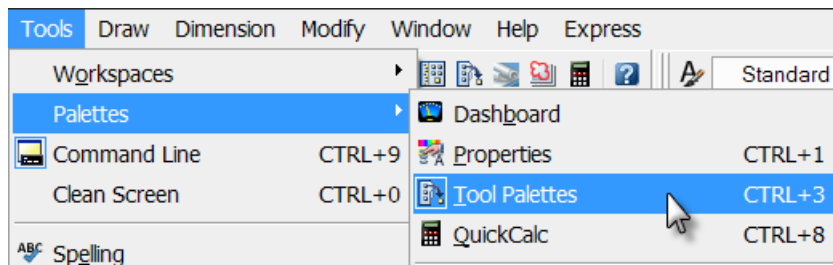


4. Click the "Close" button to exit the WinZip Self-Extractor dialog box.

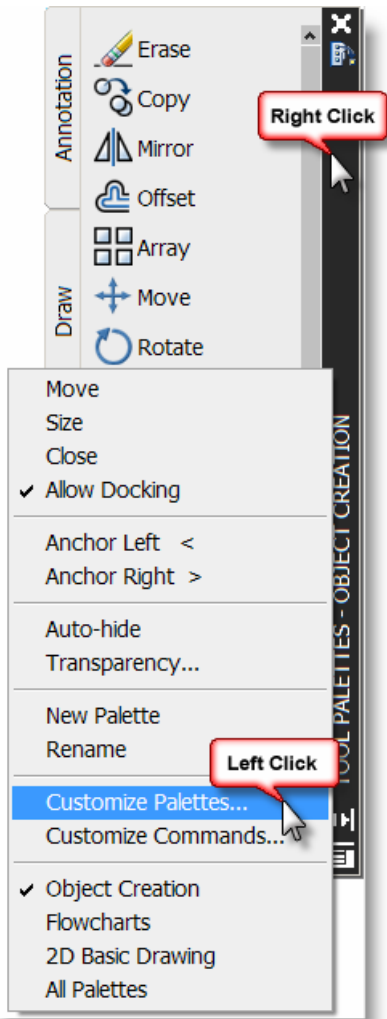


Loading the symbols in AutoCAD:

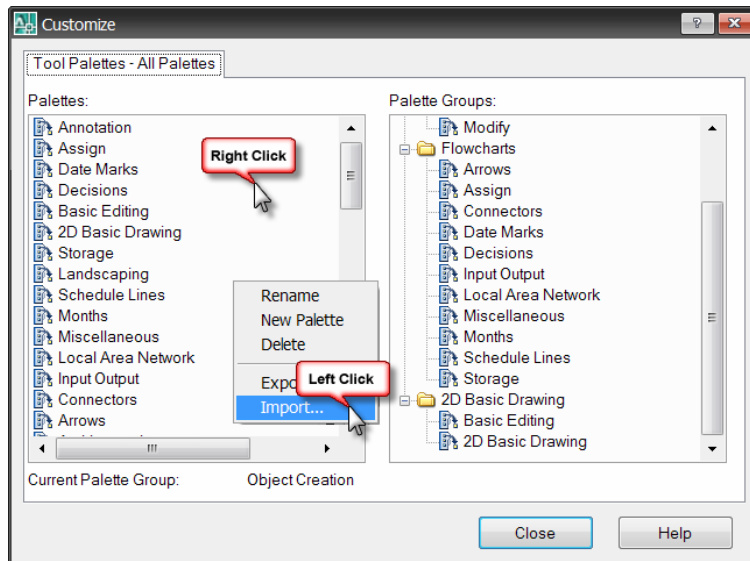
1. Launch AutoCAD (For this example, AutoCAD 2008 was utilized).
2. From the "Tools" pull down, select the "Palettes" flyout and click on "Tool Palettes".



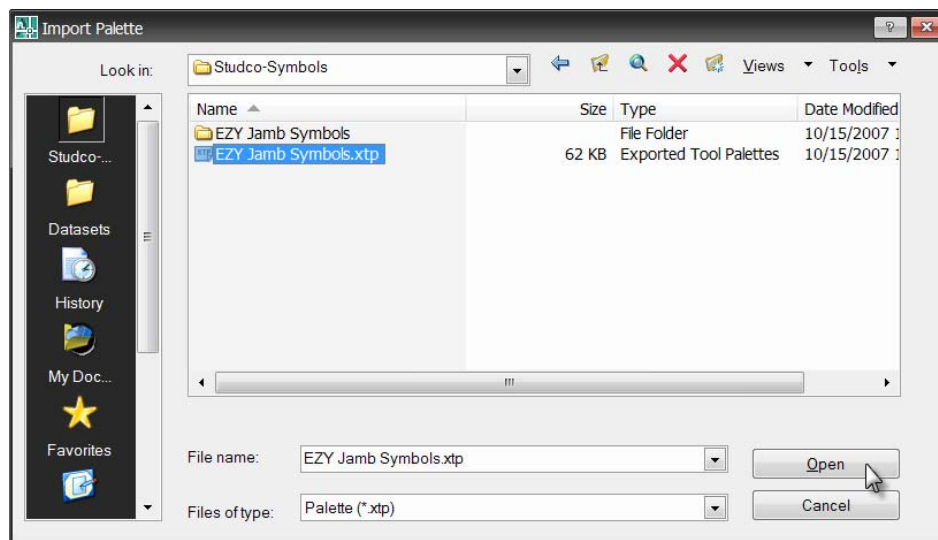
3. Right-Click on the Title Bar of the Tool Palette and then Left-Click on "Customize Palettes..." in the context menu that is shown below.



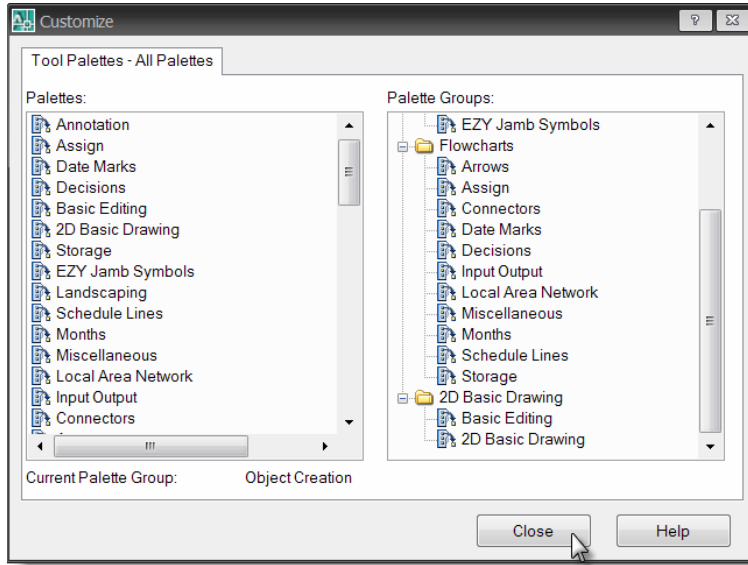
4. Right-Click anywhere in the "Palettes" list view and Left-Click on "Import..." from the context menu.



5. Navigate to C:\Studco-Symbols and select "EZY Jamb Symbols.xtp". Click on the "Open" button.



6. Click on the "Close" button to exit the "Customize" dialog box.



7. The "EZY Jamb Symbols" tab will now be displayed in the Tool Palette.

